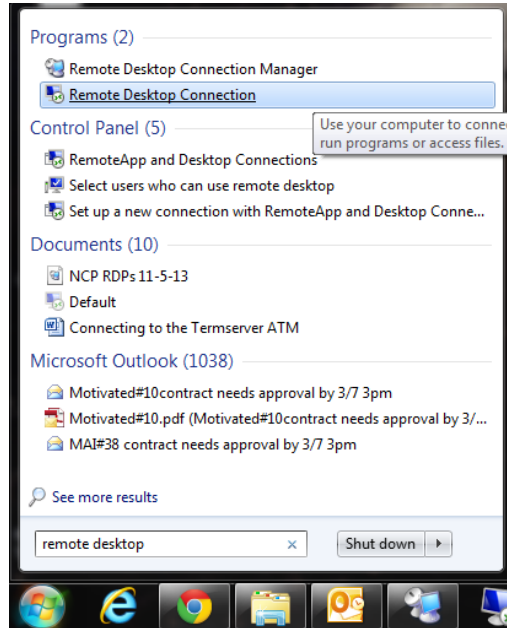
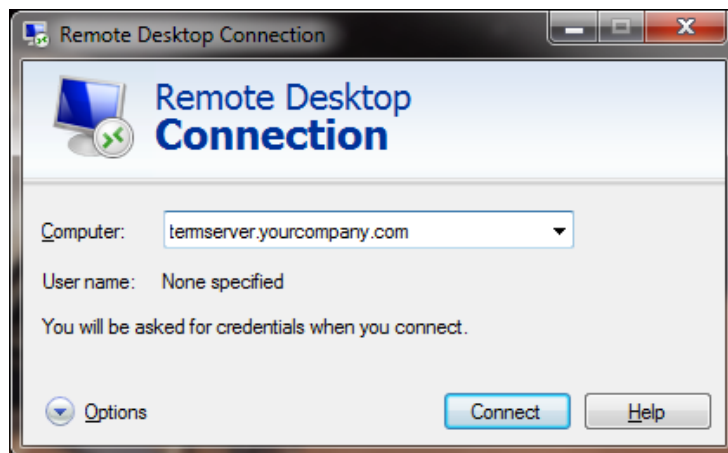


## Connect to Your Termserver

Type into the search field “Remote Desktop”. Find the “Remote Desktop Connection” icon and open it.

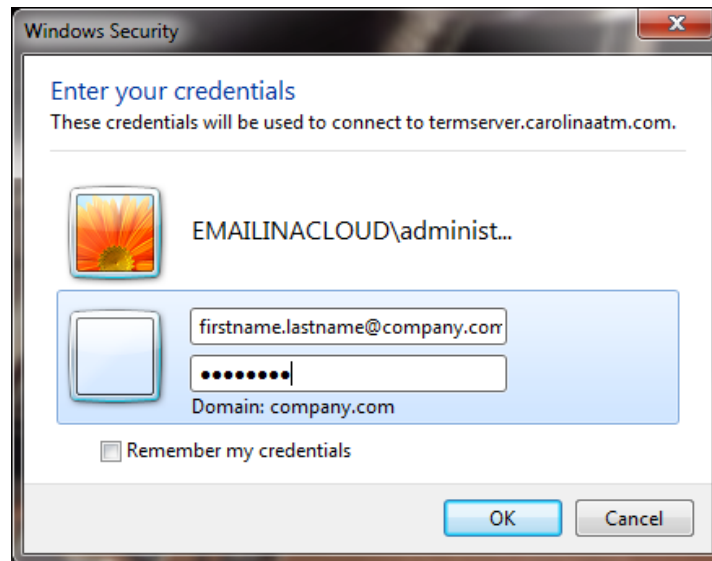


Type in your termserver address which will likely be “termserver.yourcompany.com”



Enter your credentials using the format [firstname.lastname@company.com](#)

Example: john.smith@acme.com



Check the box "Don't ask me again"  
Then click Yes.

